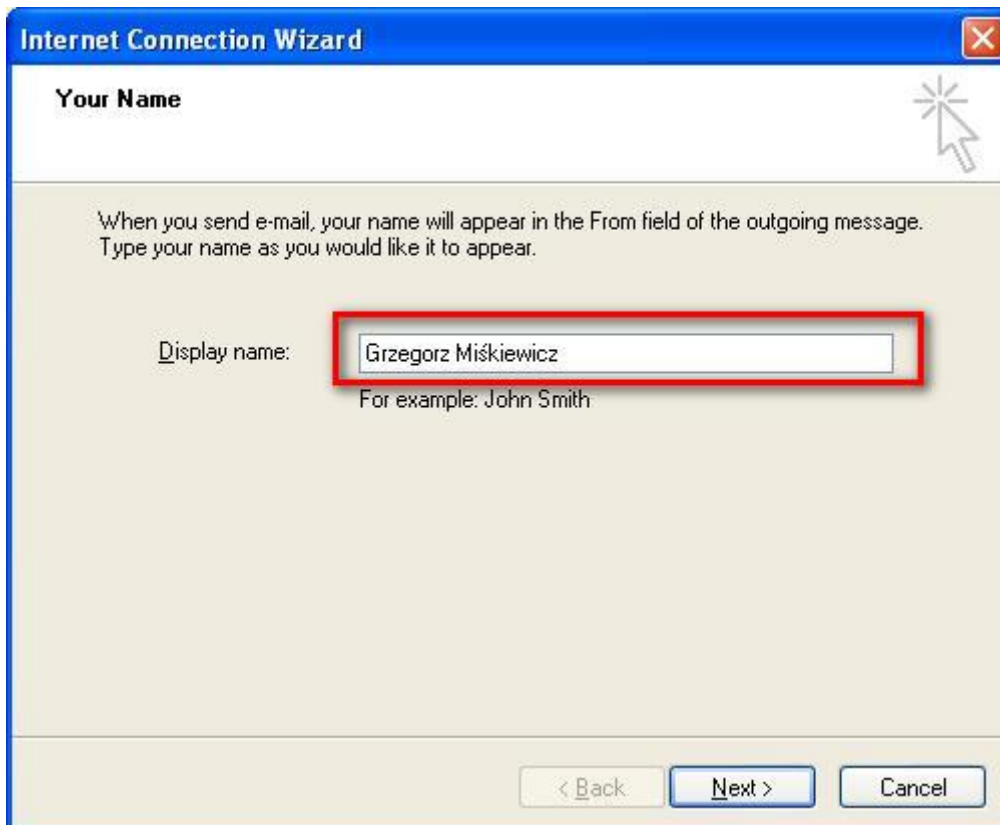


Email account setup on the new server

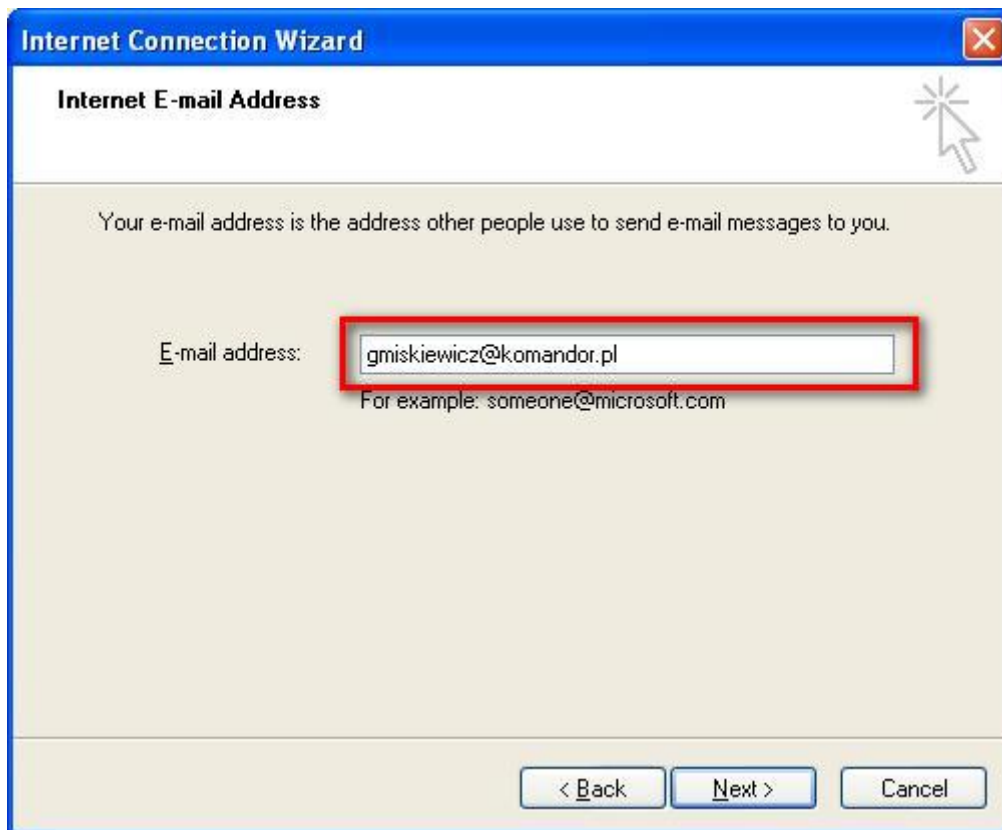
Email account setup for *Outlook Express*

- Open **Microsoft Outlook Express**
- If you don't have your account click **Create an e-mail account...**
- In the **Internet Connection Wizard** type name and click **Next**



The screenshot shows the 'Internet Connection Wizard' dialog box. The title bar reads 'Internet Connection Wizard'. The main heading is 'Your Name'. Below the heading, there is a text box containing 'Grzegorz Miśkiewicz', which is highlighted with a red rectangular border. To the left of the text box is the label 'Display name:'. Below the text box is the text 'For example: John Smith'. At the bottom of the dialog box, there are three buttons: '< Back', 'Next >', and 'Cancel'. A mouse cursor is visible in the top right corner of the dialog box.

- Next step enter **E-mail address**



- Click **Next**

Settings for IMAP

- Incoming mail: ***mail1.komandor.pl***
- Outgoing mail: ***mail1.komandor.pl***
- Click **Next**

Internet Connection Wizard

E-mail Server Names

My incoming mail server is a **IMAP** server.

Incoming mail (POP3, IMAP or HTTP) server:
mail1.komandor.pl

An SMTP server is the server that is used for your outgoing e-mail.

Outgoing mail (SMTP) server:
mail1.komandor.pl

< Back Next > Cancel

- Enter **Account name** and **Password**,
- Click **Next**

Internet Connection Wizard

Internet Mail Logon

Type the account name and password your Internet service provider has given you.

Account name: gmiskiewicz

Password: gmiskiewicz

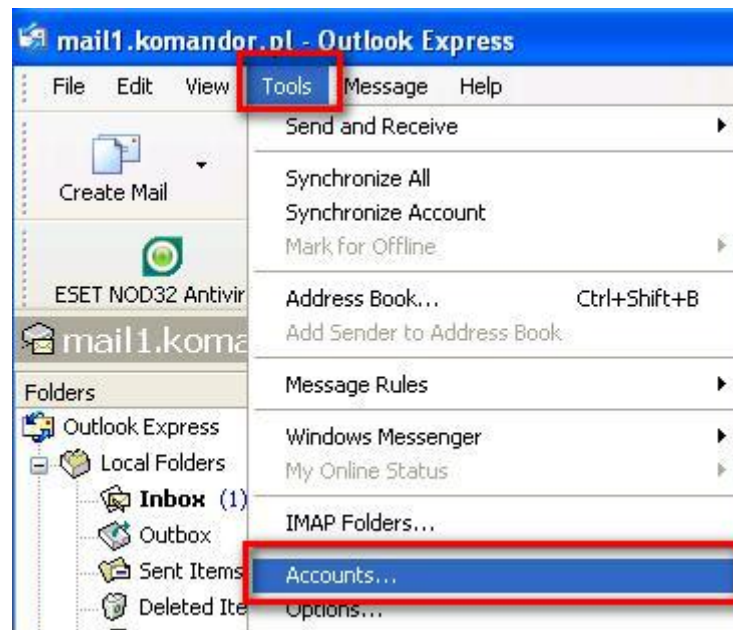
Remember password

If your Internet service provider requires you to use Secure Password Authentication (SPA) to access your mail account, select the 'Log On Using Secure Password Authentication (SPA)' check box.

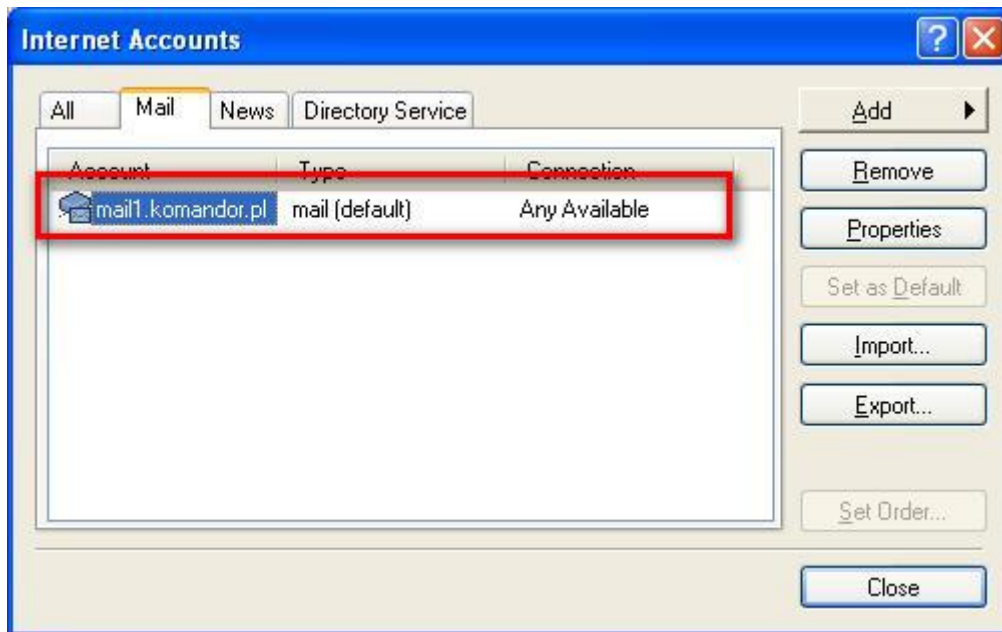
Log on using Secure Password Authentication (SPA)

< Back Next > Cancel

- In the main menu click bookmark **Tools** and choose **Accounts** from the list.



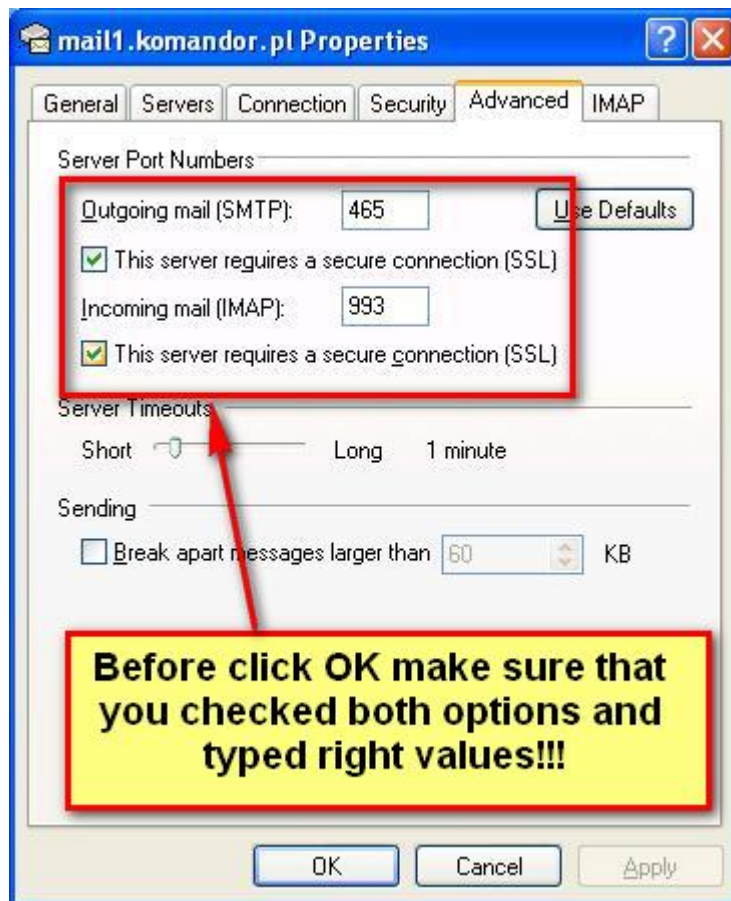
- In the **Internet Accounts** double click on account on the list



- In the **mail1.komandor.pl Properties** go to **Servers** bookmark and check:
My server requires authentication
- Click **OK**.

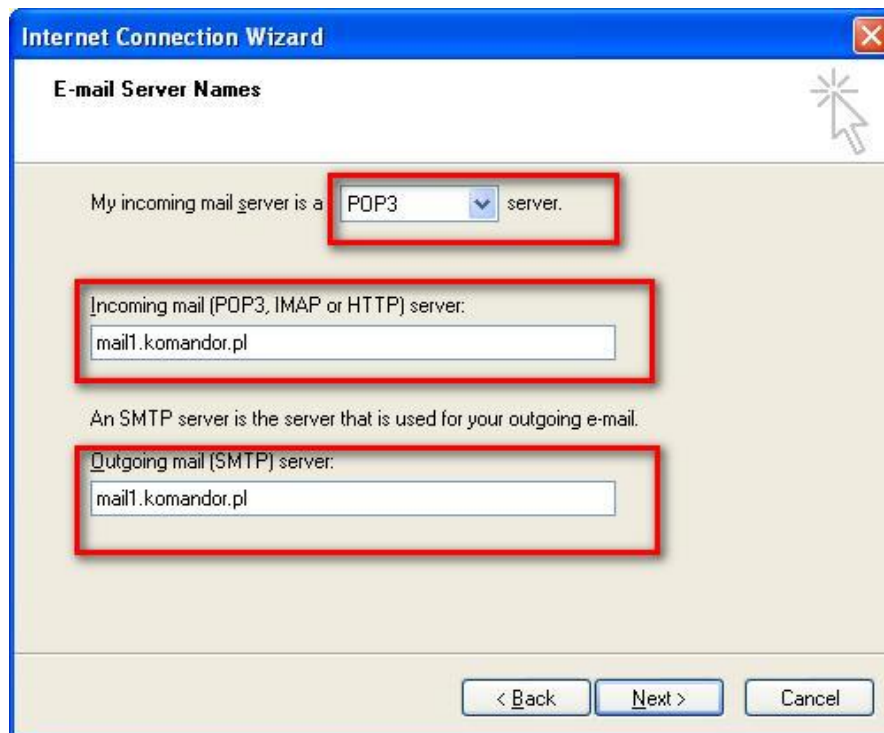


- Go to bookmark **Advanced** and enter:
 - **Outgoing mail (SMTP): 465**
 - **This Server requires a secure connection (SSL)**
 - **Incoming mail (IMAP): 993**
 - **This server requires a secure connection(SSL)**
- Click **OK**.



Settings for POP3

- Incoming mail: ***mail1.komandor.pl***
- Outgoing mail: ***mail1.komandor.pl***

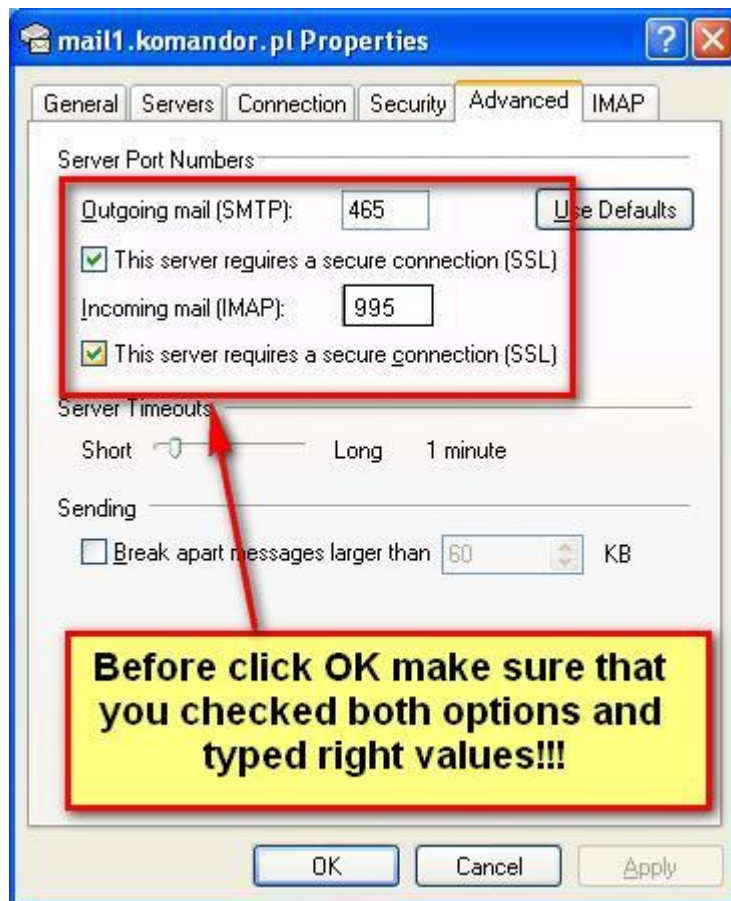


- Click **Next**
- Enter **Account name** and **Password**,
- Click **Next**
- Click **Finish**

- In the main menu click bookmark **Tools** and choose **Accounts** from the list.
- In the **Internet Accounts** double click on account on the list
- In the **mail1.komandor.pl Properties** go to **Servers** bookmark and check:
My server requires authentication



- Click **OK**.
- Go to bookmark **Advanced** and enter:
 - **Outgoing mail (SMTP): 465**
 - **This Server requires a secure connection (SSL)**
 - **Incoming mail (IMAP): 995**
 - **This server requires a secure connection(SSL)**
- Click **OK**



If you finished your account setup and your e-mail doesn't work please check if your mail works on website: <https://webmail.komandor.pl>.

If your mail still doesn't work, please contact with your Administrator.

Additional information

- You can also access to your email by:
 - o Log on <https://webmail.komandor.pl> – TLS option must be enabled in browser settings
 - o Mobile phone https://help.komandor.pl/help/imap_tel/imap_tel.html
 - o Mobile phone - application Poczta
<https://webmail.komandor.pl/horde/imp/redirect.php?autologin=&url=%2Fhorde%2Fmimp%2Findex.php> webmail.komandor.pl and select mimp option.

In case of any problems go to our help site <https://help.komandor.pl> or contact with your Administrator.